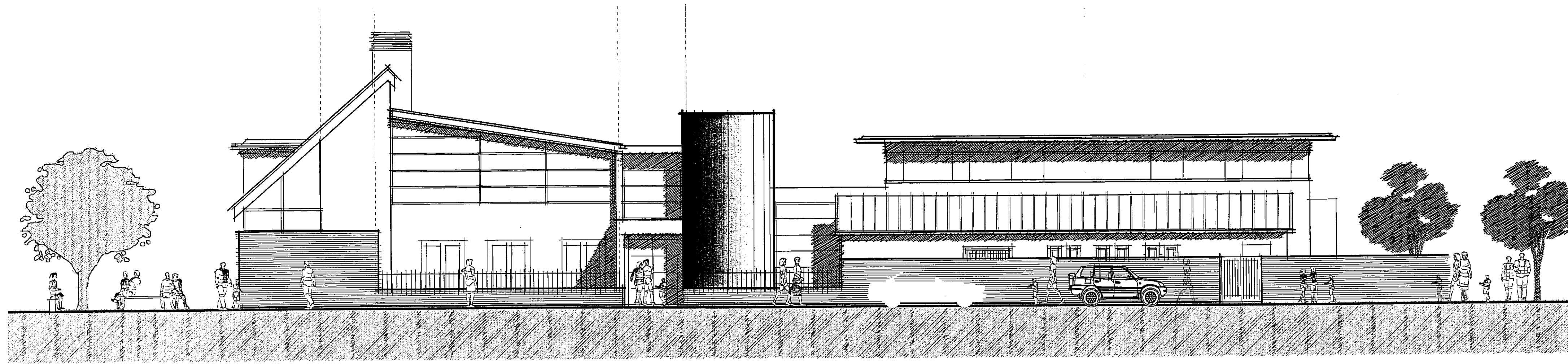


August 2009

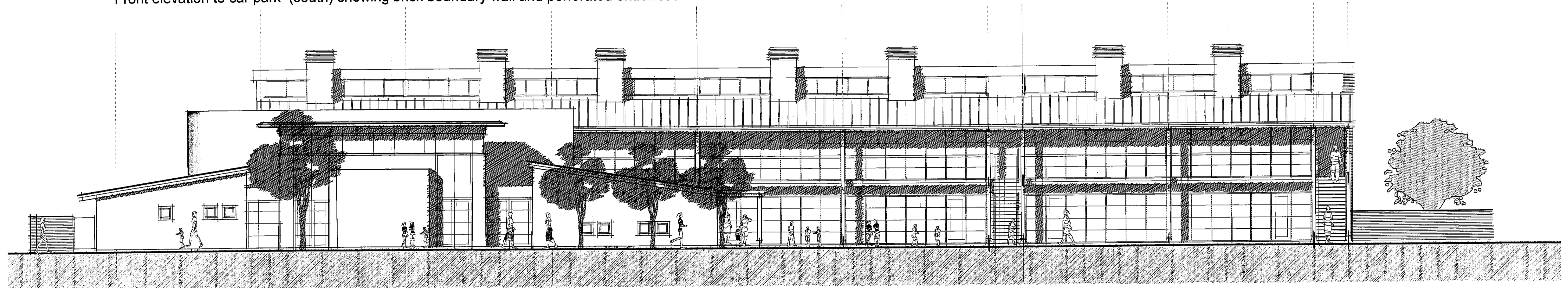
NB
| Drawn | Checked |



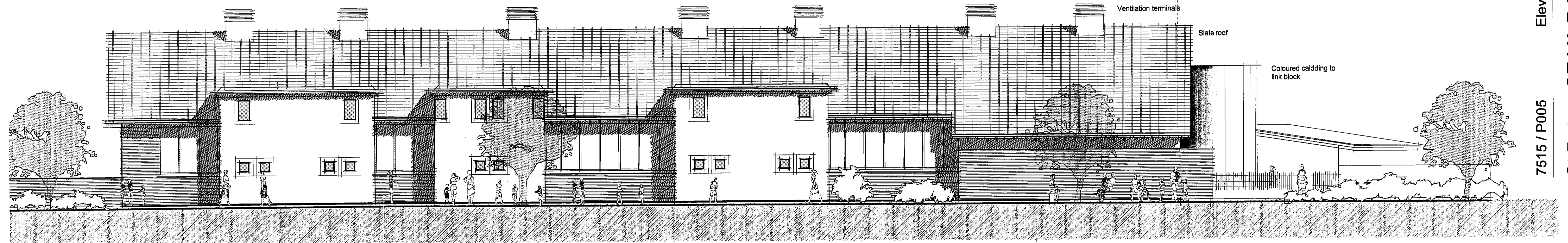
Front elevation to car park (south) showing brick boundary wall and perforated entrances

Materials

- Walls**
 - Brickwork to boundary walls
 - Brick work & render to west elevation
 - Render to kitchen, hall & reception class block
 - Composite timber/aluminium curtain walling
 - Coloured cladding to central link block
 - Roofs**
 - Slate pitched roof to community square elevation
 - Metal standing seam to shallow pitched roofs
 - Single layer membrane to flat roofs & main hall
 - Windows**
 - Composite timber/aluminium
 - Clerestorey glazing and insulated panels
- Full palette of materials and colours subject to detailed design

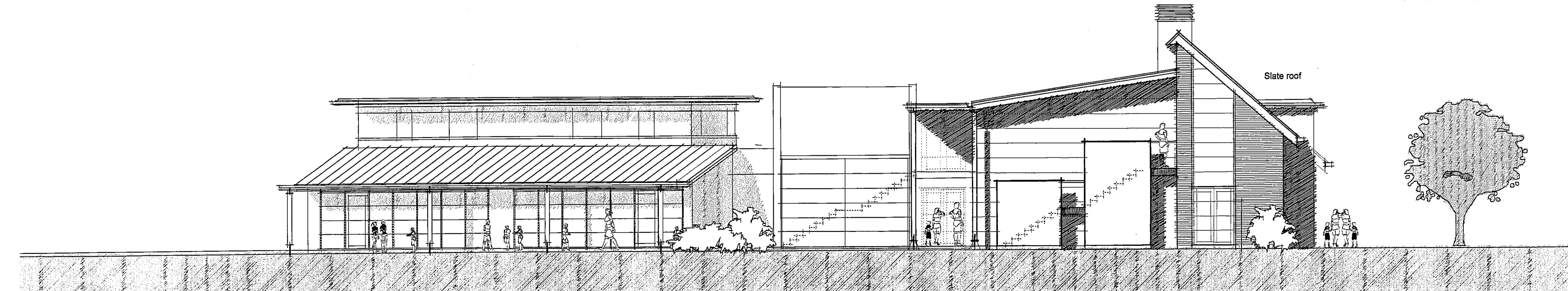


Elevation of kitchen, hall & reception class block (east) with main 2 storey block behind



Elevation to Community Square (west) showing storey & a half height of eaves

0 5 10 15 20 M



Elevation to Reception class & hall block (north) with gable end of two storey block.

Elevations 1:100

7515 / P005

St Peters CE VA Primary School, Devizes



E / 09 / 1324

THE Genesis Design STUDIO
 CHARTERED ARCHITECTS
 MEAD MILL MILL LANE ROMSEY
 HAMPSHIRE SO51 8EQ
 T: (01794) 519333
 F: (01794) 519666
 E: mail@thegenesdesignstudio.com